

Nebraska 2011 eHealth Goals and Progress

Jan. 2012

On March 15, 2010, the Nebraska Information Technology Commission received \$6.8 million in funding from the U.S. Department of Health and Human Services, Office of the National Coordinator for Health IT through the HITECH ACT enacted as part of the American Recovery and Reinvestment Act of 2009. The Nebraska Information Technology Commission is partnering with NeHII (Nebraska Health Information Initiative), eBHIN (Electronic Behavioral Health Information Network, the Nebraska Department of Health and Human Services Division of Public Health, and the Nebraska Statewide Telehealth Network to implement the cooperative agreement.

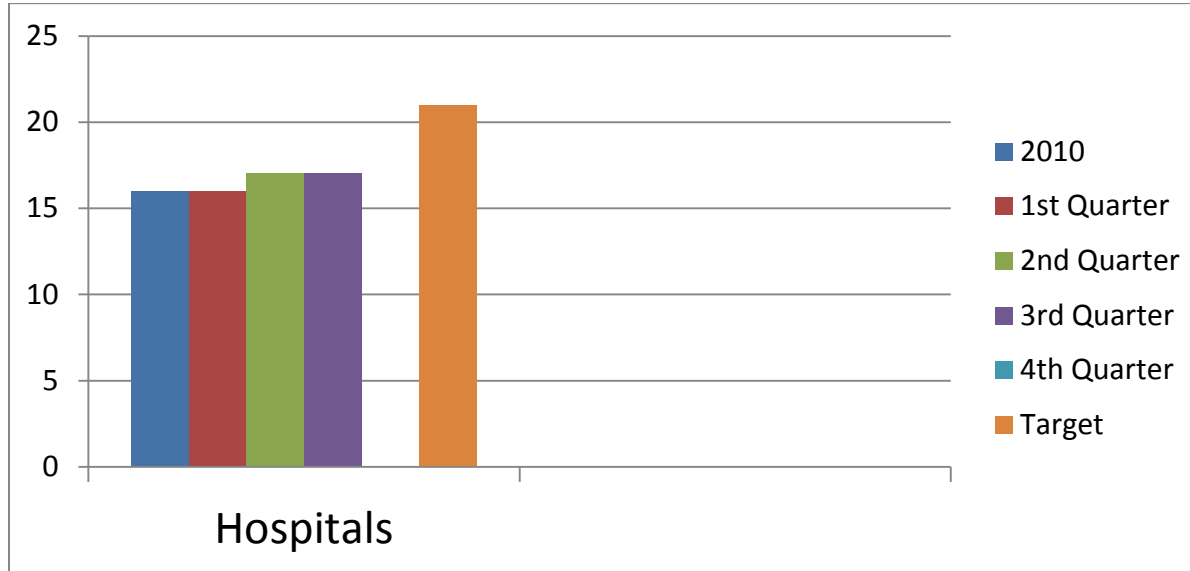
Over the past seven months, NeHII has begun implementation activities with 1 new hospital—Regional West Medical Center in Scottsbluff—and recruited 19 hospitals, including 15 Critical Access Hospitals, Boys Town National Research Hospital, Columbus Community Hospital, BryanLGH West and BryanLGH East. When these hospital implementations are completed in 2012, approximately two-thirds of the state's hospital beds will be covered by NeHII. NeHII now has over 2,000 users up from 1,288 on Dec. 31, 2010.

NeHII and the Nebraska Department of Health and Services Division of Public Health have been working with NeHII's vendor, Axolotl, to exchange information between the State of Nebraska's immunization registry, NESIIS, and NeHII. Phase I of the exchange is operational, allowing the exchange of data from NeHII's electronic health record (EHR) users to the immunization registry. Work continues on the other two phases of the project. NeHII, Axolotl, and the NDHSS Division of Public Health are also working on the exchange of information between NeHII and the State's disease reporting system (NEDSS) and the State's syndromic surveillance system.

NeHII began a pilot of the Direct project in late 2011 for results delivery via secure messaging with Pathology Services in North Platte.

Nebraska is also developing one of the country's first behavioral health information exchanges. eBHIN went live with its electronic health record and electronic practice management (EHR/EPM) system and data upload to Magellan, the State's administrative services organization, in the summer of 2011 in southeast Nebraska. In December 2011, behavioral health providers in Region I in the Panhandle went live with the EHR/EPM system. The HIE will go live in both regions early in 2012.

Participating Hospitals—NeHII



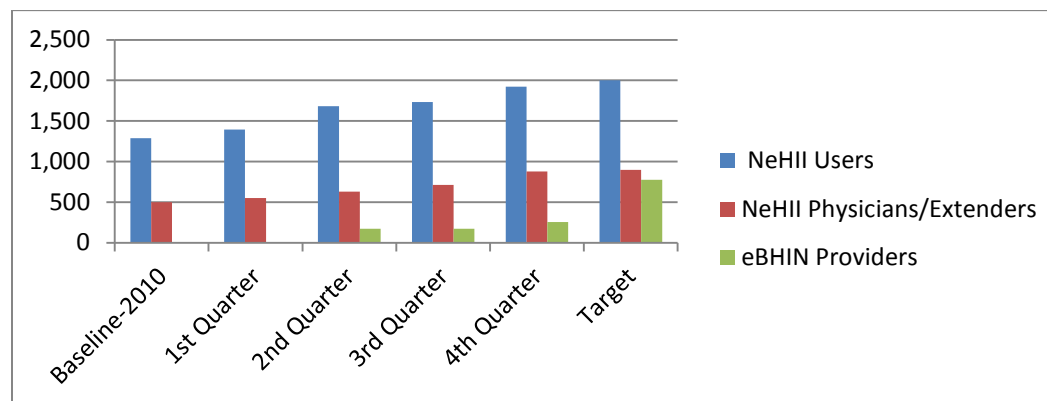
Participating Hospitals

| Baseline—2010 | 1 st Quarter | 2 nd Quarter | 3 rd Quarter | 4 th Quarter | Target-2011 |
|--|--|--|--|---|---|
| NeHII 16 hospitals* 13% of Nebraska hospitals 39% of hospital beds | 16 hospitals (13 Nebraska & 3 Iowa) | 17 hospitals (14 Nebraska & 3 Iowa) | 17 hospitals (14 Nebraska & 3 Iowa) *14 Critical Access Hospitals, 2 regional hospitals and 1 research hospital have signed participation agreements in Q3 | 17 hospitals (14 Nebraska & 3 Iowa) with Regional West Medical Center in implementation phase. 19 hospitals, including 15 Critical Access Hospitals, Boys Town National Research Hospital, Columbus Community Hospital, BryanLGH West and BryanLGH East have signed participation agreements. | NeHII 21 hospitals 22% of Nebraska hospitals 45% of hospital beds eBHIN 1 hospital |

Participating Hospitals-NeHII

| 1 st Quarter | 2 nd Quarter | 3 rd Quarter | 4 th Quarter |
|---|---|--|---|
| <ul style="list-style-type: none"> • Bellevue Medical Center - Bellevue, NE • Bergan Mercy Hospital - Omaha, NE • Children’s Hospital and Medical Center - Omaha, NE • Great Plains Regional Medical Center - Omaha, NE • Lakeside Hospital - Omaha, NE • Immanuel Hospital - Omaha, NE • Mary Lanning Memorial Hospital - Hastings, NE • Memorial Hospital -Schuyler, NE • Methodist Hospital - Omaha, NE • Methodist Women’s Hospital – Omaha, NE • Midlands Hospital -Papillion, NE • Nebraska Spine Hospital - Omaha, NE • The Nebraska Medical Center - Omaha, NE • Community Memorial Hospital - Missouri Valley, IA • Mercy Hospital - Corning, IA • Mercy Hospital - Council Bluffs, IA | <ul style="list-style-type: none"> • Bellevue Medical Center - Bellevue, NE • Bergan Mercy Hospital - Omaha, NE • Children’s Hospital and Medical Center - Omaha, NE • Creighton University and Medical Center, Omaha, NE • Great Plains Regional Medical Center - Omaha, NE • Lakeside Hospital - Omaha, NE • Immanuel Hospital - Omaha, NE • Mary Lanning Memorial Hospital - Hastings, NE • Memorial Hospital -Schuyler, NE • Methodist Hospital - Omaha, NE • Methodist Women’s Hospital – Omaha, NE • Midlands Hospital -Papillion, NE • Nebraska Spine Hospital - Omaha, NE • The Nebraska Medical Center - Omaha, NE • Community Memorial Hospital - Missouri Valley, IA • Mercy Hospital - Corning, IA • Mercy Hospital - Council Bluffs, IA | <ul style="list-style-type: none"> • Bellevue Medical Center - Bellevue, NE • Bergan Mercy Hospital - Omaha, NE • Children’s Hospital and Medical Center - Omaha, NE • Creighton University and Medical Center, Omaha, NE • Great Plains Regional Medical Center - Omaha, NE • Lakeside Hospital - Omaha, NE • Immanuel Hospital - Omaha, NE • Mary Lanning Memorial Hospital - Hastings, NE • Memorial Hospital -Schuyler, NE • Methodist Hospital - Omaha, NE • Methodist Women’s Hospital – Omaha, NE • Midlands Hospital -Papillion, NE • Nebraska Spine Hospital - Omaha, NE • The Nebraska Medical Center - Omaha, NE • Community Memorial Hospital - Missouri Valley, IA • Mercy Hospital - Corning, IA • Mercy Hospital - Council Bluffs, IA <p>• 14 Critical Access Hospitals, 2 regional hospitals and 1 research hospital have signed participation agreements in Q3</p> | <ul style="list-style-type: none"> • Bellevue Medical Center - Bellevue, NE • Bergan Mercy Hospital - Omaha, NE • Children’s Hospital and Medical Center - Omaha, NE • Creighton University and Medical Center, Omaha, NE • Great Plains Regional Medical Center - Omaha, NE • Lakeside Hospital - Omaha, NE • Immanuel Hospital - Omaha, NE • Mary Lanning Memorial Hospital - Hastings, NE • Memorial Hospital -Schuyler, NE • Methodist Hospital - Omaha, NE • Methodist Women’s Hospital – Omaha, NE • Midlands Hospital -Papillion, NE • Nebraska Spine Hospital - Omaha, NE • The Nebraska Medical Center - Omaha, NE • Community Memorial Hospital - Missouri Valley, IA • Mercy Hospital - Corning, IA • Mercy Hospital - Council Bluffs, IA <p>• 19 hospitals, including 15 Critical Access Hospitals, Boys Town National Research Hospital, Columbus Community Hospital, BryanLGH West and BryanLGH East have signed participation agreements.</p> |

Nebraska HIE Users



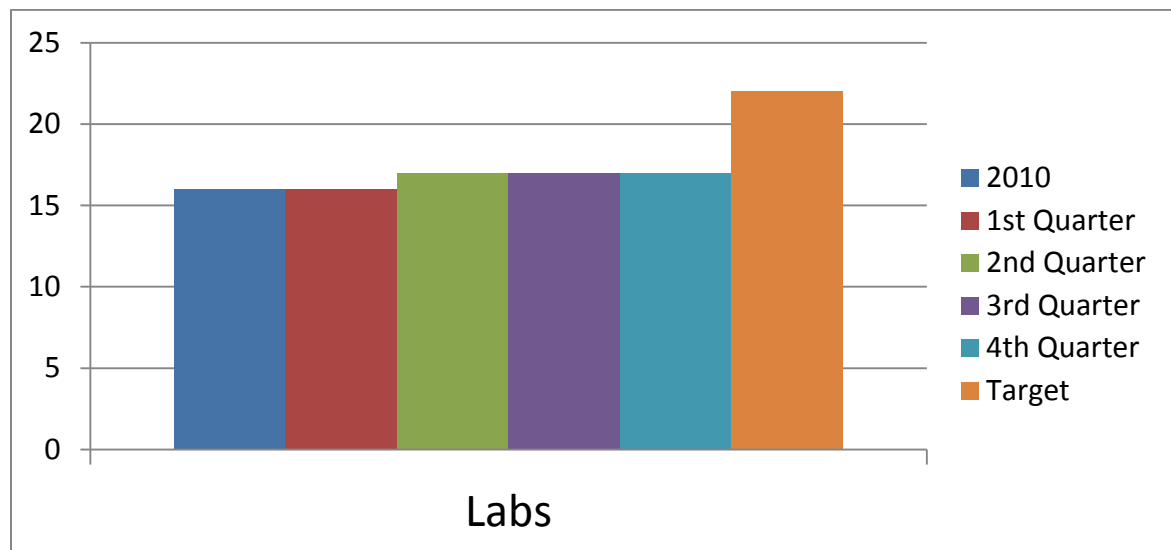
Nebraska HIE Users

| Baseline-2010 | 1 st Quarter 2011 | 2 nd Quarter 2011 | 3 rd Quarter 2011 | 4 th Quarter 2011 | Target 2011 |
|---|---|---|---|--|---|
| <p>NeHII 1,288 total users, including physicians, mid-levels, nurses, pharmacists, and staff</p> <p>500 Physician and Physician Extenders out of 4,266 in state 12% of physicians and physician extenders</p> | <p>1,396 total users, including physicians, mid-levels, nurses, pharmacists, and staff</p> <p>554 physician and physician extenders</p> | <p>1,683 total users including physicians, mid-levels, nurses, pharmacists and staff</p> <p>633 physician and physician extenders</p> <p>eBHIN – 175 providers</p> <p>4% of behavioral health providers</p> | <p>1,773 total users including physicians, mid-levels, nurses, pharmacists and staff</p> <p>714 physician and physician extenders</p> <p>eBHIN – 175 providers</p> <p>4% of behavioral health providers</p> | <p>1,922 total users including physicians, mid-levels, nurses, long-term care providers, and home health)</p> <p>880 physicians and physician extenders</p> <p>eBHIN – 259 providers</p> | <p>2,000 total users, including physicians, mid-levels, nurses, pharmacists, and staff</p> <p>900 physicians and physician extenders out of 4,266 in state</p> <p>21% of physicians and physician extenders</p> <p>eBHIN 776 providers out of 3,929 behavioral health providers</p> <p>20% of behavioral health providers</p> |

Health Plan Participation—NeHII

| Baseline-2010 | 1st Quarter 2011 | 2nd Quarter 2011 | 3rd Quarter 2011 | 4th Quarter 2011 | Target 2011 |
|---|------------------------------------|------------------------------------|------------------------------------|------------------------------------|--------------------|
| 1 health plan (BlueCross BlueShield of Nebraska) currently participates | 1 health plan | 1 | 1 | 1 | 1 |

Participating Laboratories—NeHII



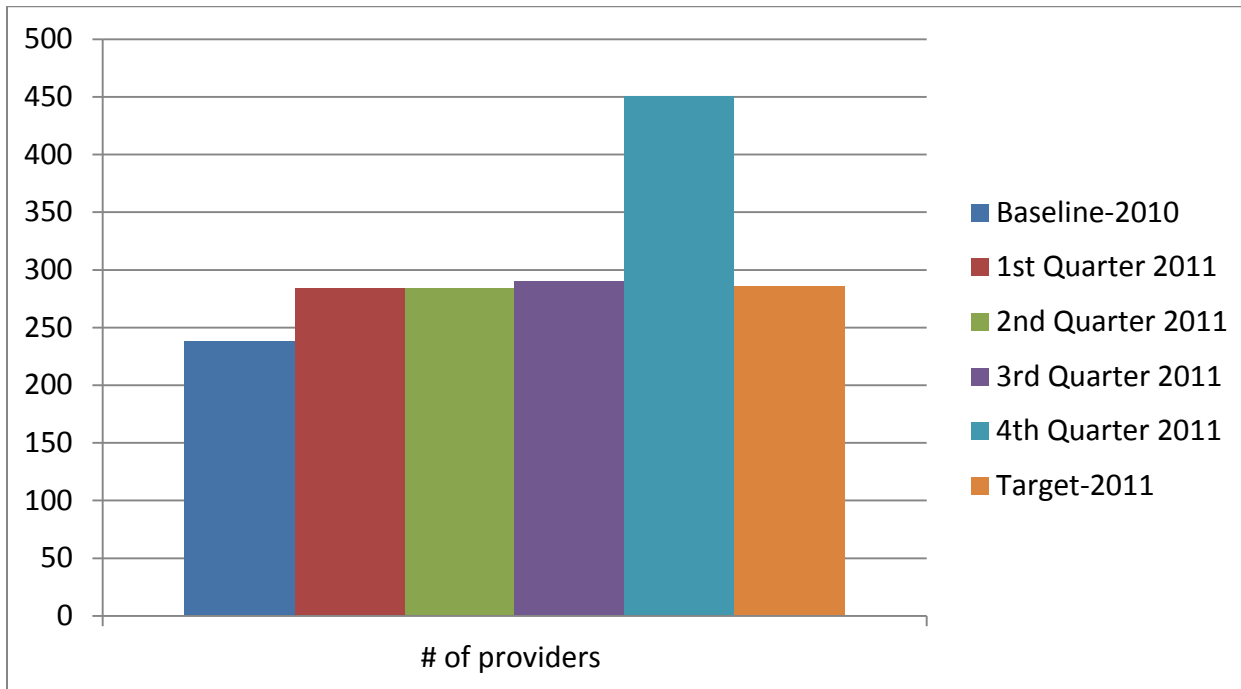
Laboratory Participation--NeHII

| Baseline-2010 | 1 st Quarter 2011 | 2 nd Quarter 2011 | 3 rd Quarter 2011 | 4 th Quarter 2011 | Target 2011 |
|---|---|---|---|---|---|
| <p>NeHII 0 out of six independent reference labs 10 hospital labs out of 90 hospital labs 10% of 96 hospital and major independent reference labs</p> | <p>16 hospitals (13 Nebraska & 3 Iowa)</p> | <p>17 hospitals (14 Nebraska & 3 Iowa)</p> | <p>17 hospitals (14 Nebraska & 3 Iowa)</p> <p>*14 Critical Access Hospitals, 2 regional hospitals and 1 research hospital have signed participation agreements in Q3</p> | <p>17 hospitals (14 Nebraska & 3 Iowa)</p> <p>*14 Critical Access Hospitals, 2 regional hospitals and 1 research hospital have signed participation agreements in Q3</p> | <p>NeHII 1 out of six independent reference labs 21 hospital labs out of 90 hospital labs 21% of hospital and independent reference labs</p> <p>eBHIN N/A. eBHIN will most likely go through NeHII for laboratory information.</p> |

Participating Laboratories--NeHII

| 1 st Quarter 2011 | 2 nd Quarter 2011 | 3 rd Quarter 2011 | 4 th Quarter 2011 |
|--|---|---|--|
| <ul style="list-style-type: none"> • Bellevue Medical Center - Bellevue, NE • Bergan Mercy Hospital - Omaha, NE • Children’s Hospital and Medical Center - Omaha, NE • Great Plains Regional Medical Center - Omaha, NE • Lakeside Hospital - Omaha, NE • Immanuel Hospital - Omaha, NE • Mary Lanning Memorial Hospital - Hastings, NE • Memorial Hospital -Schuyler, NE • Methodist Hospital - Omaha, NE • Methodist Women’s Hospital – Omaha, NE • Midlands Hospital -Papillion, NE • Nebraska Spine Hospital - Omaha, NE • The Nebraska Medical Center - Omaha, NE • Community Memorial Hospital - Missouri Valley, IA • Mercy Hospital, Corning, IA • Mercy Hospital – Council Bluffs, IA | <ul style="list-style-type: none"> • Bellevue Medical Center - Bellevue, NE • Bergan Mercy Hospital - Omaha, NE • Children’s Hospital and Medical Center - Omaha, NE • Creighton University and Medical Center, Omaha, NE • Great Plains Regional Medical Center - Omaha, NE • Lakeside Hospital - Omaha, NE • Immanuel Hospital - Omaha, NE • Mary Lanning Memorial Hospital - Hastings, NE • Memorial Hospital -Schuyler, NE • Methodist Hospital - Omaha, NE • Methodist Women’s Hospital – Omaha, NE • Midlands Hospital -Papillion, NE • Nebraska Spine Hospital - Omaha, NE • The Nebraska Medical Center - Omaha, NE • Community Memorial Hospital - Missouri Valley, IA • Mercy Hospital - Corning, IA • Mercy Hospital - Council Bluffs, IA | <ul style="list-style-type: none"> • Bellevue Medical Center - Bellevue, NE • Bergan Mercy Hospital - Omaha, NE • Children’s Hospital and Medical Center - Omaha, NE • Creighton University and Medical Center, Omaha, NE • Great Plains Regional Medical Center - Omaha, NE • Lakeside Hospital - Omaha, NE • Immanuel Hospital - Omaha, NE • Mary Lanning Memorial Hospital - Hastings, NE • Memorial Hospital -Schuyler, NE • Methodist Hospital - Omaha, NE • Methodist Women’s Hospital – Omaha, NE • Midlands Hospital -Papillion, NE • Nebraska Spine Hospital - Omaha, NE • The Nebraska Medical Center - Omaha, NE • Community Memorial Hospital - Missouri Valley, IA • Mercy Hospital - Corning, IA • Mercy Hospital - Council Bluffs, IA <p>*14 Critical Access Hospitals, 2 regional hospitals and 1 research hospital have signed participation agreements in Q3</p> | <ul style="list-style-type: none"> • Bellevue Medical Center - Bellevue NE • Bergan Mercy Hospital - Omaha, NE • Children’s Hospital and Medical Center - Omaha, NE • Creighton University and Medical Center, Omaha, NE • Great Plains Regional Medical Center - Omaha, NE • Lakeside Hospital - Omaha, NE • Immanuel Hospital - Omaha, NE • Mary Lanning Memorial Hospital - Hastings, NE • Memorial Hospital -Schuyler, NE • Methodist Hospital - Omaha, NE • Methodist Women’s Hospital – Omaha, NE • Midlands Hospital -Papillion, NE • Nebraska Spine Hospital - Omaha, NE • The Nebraska Medical Center - Omaha, NE • Community Memorial Hospital - Missouri Valley, IA • Mercy Hospital - Corning, IA • Mercy Hospital - Council Bluffs, IA <p>*14 Critical Access Hospitals, 2 regional hospitals and 1 research hospital have signed participation agreements in Q3</p> |

Providers Submitting to Immunization Registry



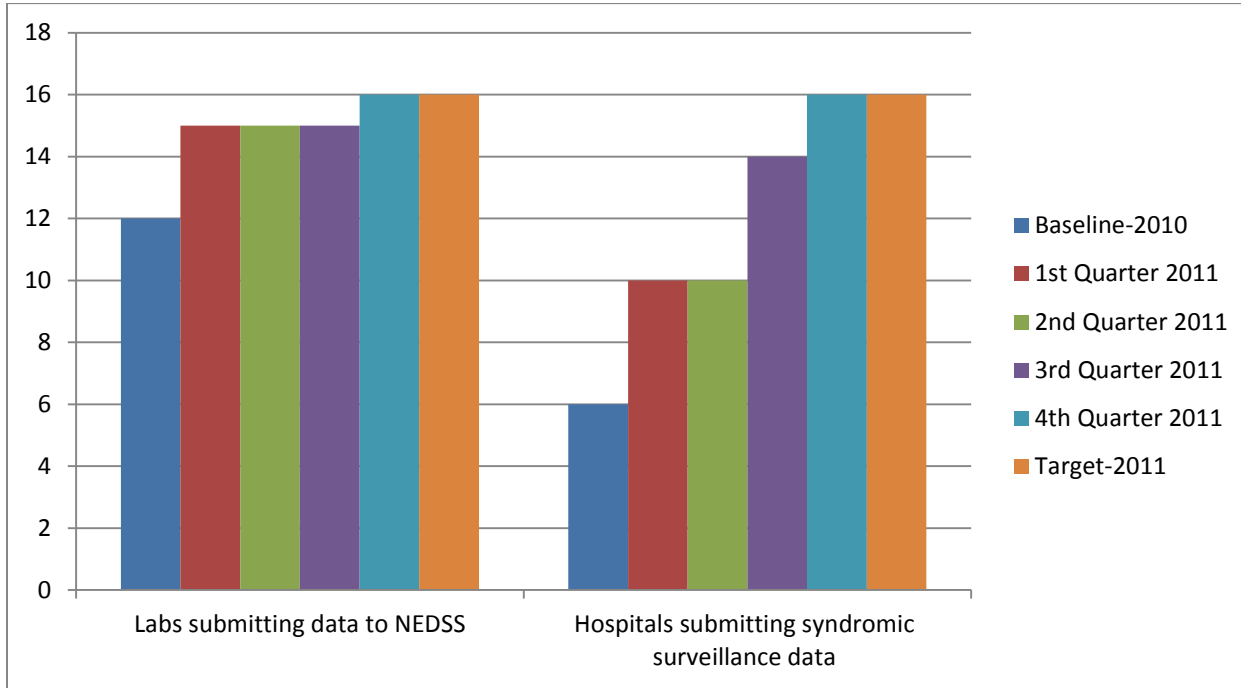
Providers Submitting to Immunization Registry

| Baseline—2010 | 1 st Quarter | 2 nd Quarter | 3 rd Quarter | 4 th Quarter | Target—End of 2011 |
|---------------|-------------------------|-------------------------|-------------------------|-------------------------|---------------------------|
| 238 | 284 | 284 | 290* | 450** | An increase of 20% to 286 |

*Note: 31 providers were sending immunization data electronically at the end of the third quarter.

**Note: 450 providers were sending immunization data electronically at the end of the fourth quarter.

Public Health Reporting



Public Health Reporting

| Public Health Reporting | Baseline—2010 | 1 st Quarter | 2 nd Quarter | 3 rd Quarter | 4 th Quarter | Target—End of 2011 |
|---|---------------|-------------------------|-------------------------|-------------------------|-------------------------|--------------------------|
| # of labs submitting data to NEDSS | 12 | 15 | 15 | 15 | 16 | An increase of 30% to 16 |
| # of hospitals submitting data to the syndromic surveillance system | 6 | 10 | 10 | 14 | 16 | 16 |

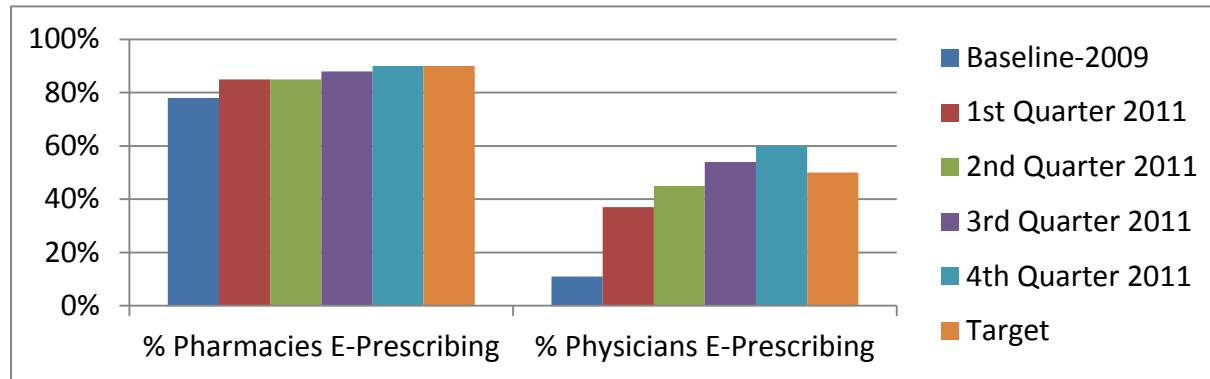
Public Health Reporting

| Public Health Connections | 1 st Quarter | 2 nd Quarter | 3 rd Quarter | 4 th Quarter |
|--|---|---|---|--|
| Labs submitting to NEDSS—Please list and include city | UNMC - Omaha Bryan LGH - Lincoln Columbus Community Hospital Faith Regional Medical Center - Norfolk Great Plains Regional-North Platte Regional West-Scottsbluff Children’s Hospital-Omaha ARUP-serves multiple cities in NE Cerner-serves multiple cities in NE Kearney Good Samaritan-Kearney Creighton Medical-Omaha PLab-Lincoln Quest-serves multiple cities in NE Catholic Health-Grand Island Alegent-Lincoln | UNMC - Omaha Bryan LGH - Lincoln Columbus Community Hospital Faith Regional Medical Center - Norfolk Great Plains Regional-North Platte Regional West-Scottsbluff Children’s Hospital-Omaha ARUP-serves multiple cities in NE Cerner-serves multiple cities in NE Kearney Good Samaritan-Kearney Creighton Medical-Omaha PLab-Lincoln Quest-serves multiple cities in NE Catholic Health-Grand Island Alegent-Lincoln | UNMC - Omaha Bryan LGH - Lincoln Columbus Community Hospital Faith Regional Medical Center - Norfolk Great Plains Regional-North Platte Regional West-Scottsbluff Children’s Hospital-Omaha ARUP-serves multiple cities in NE Cerner-serves multiple cities in NE Kearney Good Samaritan-Kearney Creighton Medical-Omaha PLab-Lincoln Quest-serves multiple cities in NE Catholic Health-Grand Island Alegent-Lincoln | UNMC - Omaha Bryan LGH - Lincoln Columbus Community Hospital Faith Regional Medical Center - Norfolk Great Plains Regional-North Platte Regional West-Scottsbluff Children’s Hospital-Omaha ARUP-serves multiple cities in NE Cerner-serves multiple cities in NE Kearney Good Samaritan-Kearney Creighton Medical-Omaha PLab-Lincoln Quest-serves multiple cities in NE Catholic Health-Grand Island Alegent-Lincoln Fremont Area Medical Center |
| Hospitals submitting syndromic surveillance data—Please list and include city | York General Hospital Children’s Hospital-Omaha Great Plains Reg Med Center-North Platte Fremont Area Medical Center Beatrice Comm. Hospital The NE Medical Center-Omaha Nebraska Methodist Hosp – Omaha Mary Lanning Hospital-Hastings Falls City Comm. Medical Center Box Butte General Hospital | York General Hospital Children’s Hospital-Omaha Great Plains Reg Med Center-North Platte Fremont Area Medical Center Beatrice Comm. Hospital The NE Medical Center-Omaha Nebraska Methodist Hosp – Omaha Mary Lanning Hospital-Hastings Falls City Comm. Medical Center Box Butte General Hospital | Children’s Hospital-Omaha Great Plains Reg Med Center-North Platte Fremont Area Medical Center Beatrice Comm. Hospital The NE Medical Center-Omaha Nebraska Methodist Hosp – Omaha Mary Lanning Hospital-Hastings Falls City Comm. Medical Center Box Butte General Hospital McCook Community Hospital Providence Medical Center (Wayne) | Children’s Hospital-Omaha Great Plains Reg Med Center-North Platte Fremont Area Medical Center Beatrice Comm. Hospital The NE Medical Center-Omaha Nebraska Methodist Hosp – Omaha Mary Lanning Hospital-Hastings Falls City Comm. Medical Center Box Butte General Hospital McCook Community Hospital Providence Medical Center (Wayne) Crete Area Medical Center Box Butte Primary Care |

Public Health Reporting--Transactions

| Transaction Type | July –Dec 2011 | | | |
|--|----------------|--|--|--|
| Immunizations into NESIIS | 232,458 | | | |
| Lab Results into NEDSS | 65,501 | | | |
| Cardiovascular Disease Syndromic Syndromic Surveillance transactions | 14,007 | | | |
| ED Syndromic Surveillance transactions | 164,827 | | | |
| Total | 476,793 | | | |

E-Prescribing Adoption



E-Prescribing Adoption

| Baseline-- End of 2009 | 1 st Quarter | 2 nd Quarter | 3 rd Quarter | 4 th Quarter | Target— End of 2011 |
|---|--|--|---|--|--|
| 78% of community pharmacies activated for e-prescribing | 85% of pharmacies are activated for e-prescribing (March 2011) Note: Two pharmacies joined NeHII | 85% of pharmacies are activated for e-prescribing (May 2011) Note: Four more pharmacies joined NeHII, bring the total to six | 88% of pharmacies are activated for e-prescribing (August 2011) | 90% of community pharmacies are activated for e-prescribing (November 2011) | 90% of community pharmacies activated for e-prescribing |
| 11% of physicians in Nebraska routed prescriptions electronically | 37% (1197 out of 3202) of physicians in Nebraska are routing prescriptions electronically (March 2011) | 45% (1436 out of 3202) of physicians in Nebraska are routing prescriptions electronically (May 2011) | 54% (2342 out of 3202) of physicians in Nebraska are routing prescriptions electronically (August 2011) | 60% of physicians in Nebraska are routing prescriptions electronically (November 2011) | 50% of physicians in Nebraska routing prescriptions electronically |